

CERTIFICATIONS AND SYMBOLS

OLD CERTIFICATION (2011)

EN ISO 20345:2011

NEW CERTIFICATION (2022)

EN ISO 20345:2022

EXPLANATION

1

Slip resistance

SRA, SRB & SRC

Slip resistance

SR
(optional additional designation)
If this certification is obtained then the SR designation may be used

SR

Slip resistance

SRA tests are a mandatory part of the new standard and are sufficient to achieve certification. This no longer provides any designation.

SR must only appear if the manufacturer has carried out additional tests. These simulate slip resistance on surfaces covered with oil/grease.

2

Protective midsole

S1^P P = protective midsole (made from metal or fibre)

S3 with protective midsole (made from metal or fibre)

Protective midsole

S1^P **S3** = Protective midsole made from metal

S1^{PL} **S3^L** = Protective midsole made from non-metal material

S1^{PS} **S3^S**

┌──┐ 4,5 mm

L = Large

S1^{PL}

S3^L

┌──┐ 3 mm

S = Small

S1^{PS}

S3^S

Protective midsole

The new standard now distinguishes between protective midsoles made from metal and non-metal materials.

The new standard now tests two sizes of midsole: **Large & Small.**

The old standard only tested the Large size and did not distinguish between the type of protective midsole.

I.e. the old **S1^P** = the new **S1^{PL}**

3

Scuff Cap abrasion

SC

(ProNose certification)
Additional designation. If this certification is obtained then the SC designation may be used.

This designation indicates that the shoe's ProNose has been tested and certified as extra durable.

It indicates whether the shoe can be recommended for work involving kneeling



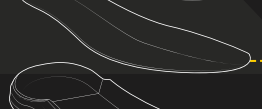
3 Scuff Cap abrasion (ProNose)



2 Protective midsole



1 Slip resistance












CERTIFICATIONS AND SYMBOLS

Certification: EN ISO 20345:2022

Footwear certified in accordance with EN ISO 20345:2011, has, at minimum, a toe cap to protect from falling objects at 200J and compression (15kN).

CERTIFICATIONS	SAFETY FOOTWEAR (Class I)									WATERPROOF BOOTS (Class II)				SAFETY FOOTWEAR (Class I)			
	SB	S1	S1 ^P	S1 ^{PL}	S1 ^{PS}	S2	S3	S3 ^L	S3 ^S	S4	S5	S5 ^L	S5 ^S	S6	S7	S7 ^L	S7 ^S
SB: Toe cap	x	x	x	x	x	x	x	x	x	x	x	x	x	x	x	x	x
P: Protective midsole, 1100 Newton			x				x				x				x		
PL: Non-metal protective midsole, tested with a 4,5 mm nail				x				x				x				x	
PS: Non-metal protective midsole, tested with a 3 mm nail					x							x					x
WPA: Water-resistant upper						x	x	x	x	-	-	-	-				
WR: Waterproof upper										-	-	-	-	x	x	x	x
E: Shock absorption in the heel (min. 20J)		x	x	x	x	x	x	x	x	x	x	x	x	x	x	x	x
A: Antistatic sole (ml. <0.1 MΩ-1000 MΩ)		x	x	x	x	x	x	x	x	x	x	x	x	x	x	x	x
Closed shoe		x	x	x	x	x	x	x	x	x	x	x	x	x	x	x	x
Patterned sole (min. 2,5 mm)							x	x	x		x	x	x		x	x	x

Symboler

-  SR: The outsole is skid tested on ceramic tile with a glycerin solution
-  SR: The outsole is skid tested on ceramic tile with a glycerin solution
-  FO: Fuel & Oil resistance: Approved oil- and fuel-resistant outsole
-  LG: Ladder Grip: Footwear with ladder grip approved for use on ladders
-  CI: Cold Insulation of Outsole: Approved cold-insulating outsole
-  CI: Cold Insulation of Outsole: Approved cold-insulating outsole
-  HRO: Heat Resistant Outsole: Approved heat-resistant outsole that can withstand up to 300°C for one minute
-  HI: Heat Insulation of Outsole: Approved heat-insulating outsole
-  ESD: Conductive footwear in accordance with standard IEC 61340-4-3, with electrical resistance $\geq 0.1 \text{ M}\Omega$ $100 \text{ M}\Omega$.